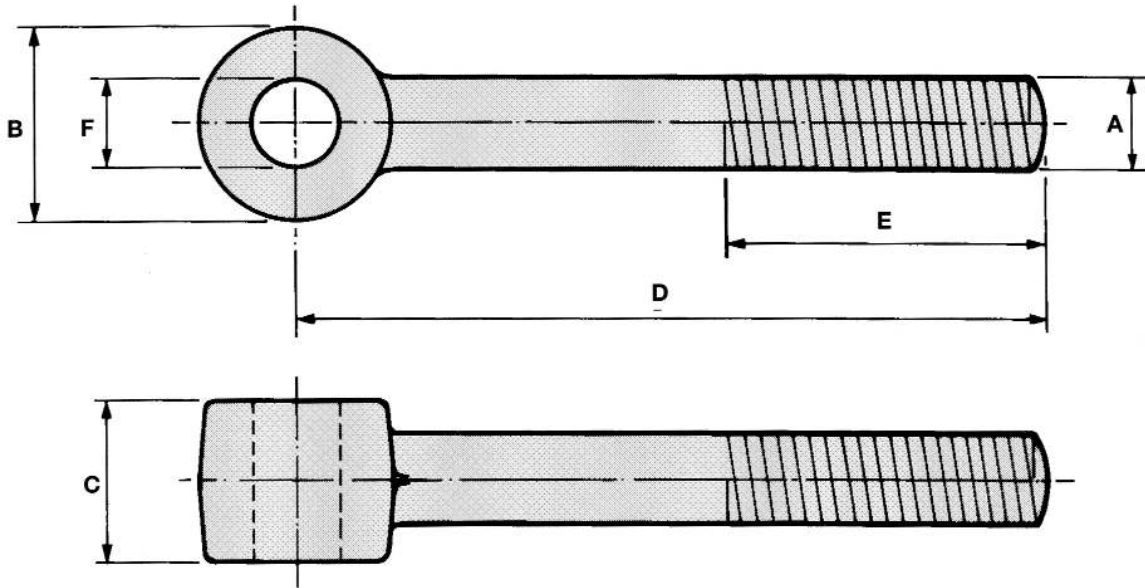


Swivel Eyebolts (Increased Eye Thickness)

THREADS M6 - M12 (1/4" - 1/2")



**BFE
15**

A		B	C	D		E		F
mm	inches	mm	MIN	MIN	MAX	MIN	MAX	
M6	1/4	19	8	30	160	15	140	To suit customers requirements Dimension "F" is generally drilled out to take corresponding dimension "A" of the same size
M6	1/4	25	10	35	160	15	140	
M6	1/4	25	13	35	160	15	140	
M8	5/16	25	10	35	160	15	140	
M8	5/16	25	13	35	160	15	140	
M8	5/16	38	16	40	165	15	135	
M8	5/16	42	20	45	170	15	140	
M8	5/16	51	25	50	160	15	140	
M10	3/8	25	13	35	160	15	140	
M10	3/8	32	13	40	165	15	140	
M10	3/8	38	16	45	165	15	140	
M10	3/8	42	20	45	170	15	140	
M10	3/8	51	22	50	175	15	140	
M10	3/8	51	25	50	175	15	140	
M10	3/8	60	30	55	180	15	140	
M12	1/2	25	14	40	210	20	190	
M12	1/2	38	16	50	220	20	190	
M12	1/2	42	20	55	220	20	190	
M12	1/2	51	22	55	225	20	190	
M12	1/2	51	25	55	225	20	190	
M12	1/2	62	24	60	230	20	190	
M12	1/2	60	30	60	230	20	190	

© Brooks Forgings Ltd 2008

SPECIFICATIONS AVAILABLE

MATERIAL

- CARBON STEELS
- STAINLESS STEELS
- ALLOY STEELS
- B7, 4.6, 5.6, 8.8

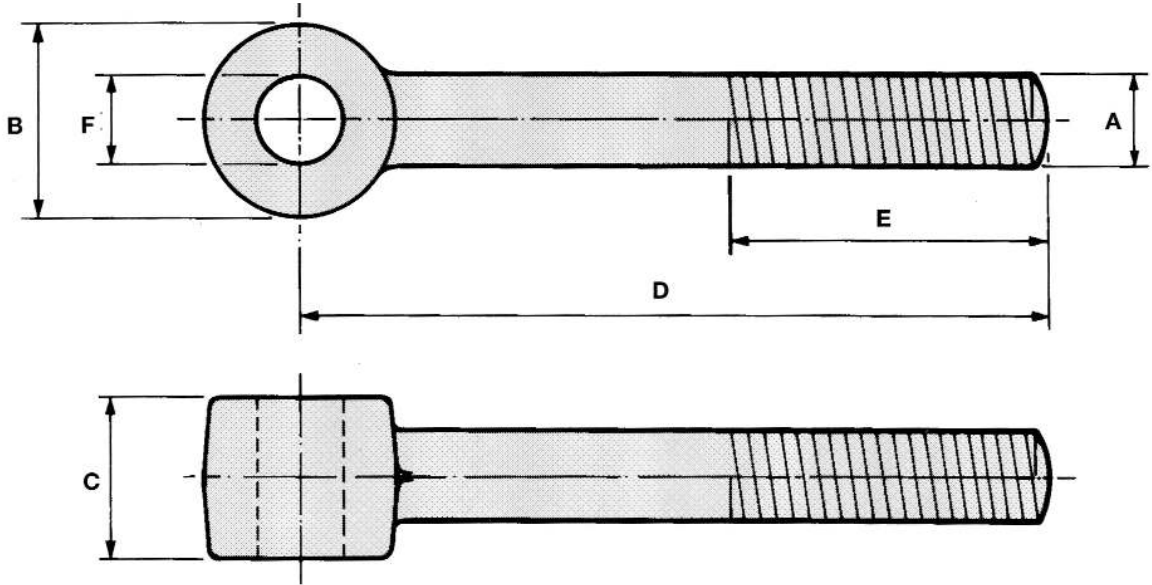
**NON STANDARDS
AVAILABLE TO SUIT
CUSTOMERS REQUIREMENTS**

FINISH

- SELF COLOUR
- GALVANISED
- ELECTROPLATED
- CHEMICAL BLACK
- PTFE COATING

Swivel Eyebolts (Increased Eye Thickness)

THREADS M16 - M36 (5/8" - 1.3/8")



**BFE
15**

A		B	C	D		E		F
mm	inches	mm	MIN mm	MIN mm	MAX mm	MIN mm	MAX mm	
M16	5/8	35	17	45	1500	20	1400	To suit customers requirements Dimension "F" is generally drilled out to take corresponding dimension "A" of the same size
M16	5/8	38	19	50	270	20	240	
M16	5/8	42	20	50	270	20	240	
M16	5/8	51	25	55	275	20	240	
M16	5/8	62	24	60	280	20	240	
M16	5/8	60	30	60	280	20	240	
M16	5/8	60	32	60	280	20	240	
M20	3/4	45	25	52	1500	25	1400	
M20	3/4	51	25	55	275	25	240	
M20	3/4	62	24	60	280	25	240	
M20	3/4	60	30	60	280	25	240	
M20	3/4	60	32	60	280	25	240	
M24	---	51	28.5	60	1500	25	1400	
M24	1	60	30	65	280	25	240	
M24	1	60	32	70	280	25	240	
M30	1. 1/8	60	32	70	280	30	240	
M30	1. 1/8	60	38	70	280	30	240	
M33	1. 1/4	60	38	75	280	35	240	
M36	1. 3/8	60	38	80	1500	40	1400	

© Brooks Forgings Ltd 2008

SPECIFICATIONS AVAILABLE

MATERIAL
CARBON STEELS
STAINLESS STEELS
ALLOY STEELS
B7, 4.6, 5.6, 8.8

**NON STANDARDS
AVAILABLE TO SUIT
CUSTOMERS REQUIREMENTS**

FINISH
SELF COLOUR
GALVANISED
ELECTROPLATED
CHEMICAL BLACK
PTFE COATING

tel. 01384 566772 fax. 01384 637380 web. www.brooksforgings.co.uk