

Dynamo Eyebolts

TO BS 4278 : 1984 TABLE 3 & TABLE 6

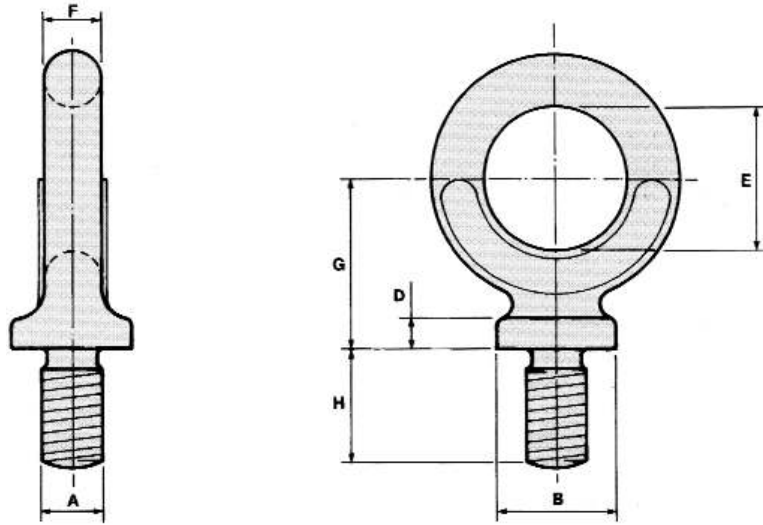


TABLE 3

| A | B | D | E | F | G | H | SWL | Weight Each |
|-----|----|----|-----|----|-----|----|--------|-------------|
| mm | mm | mm | mm | mm | mm | mm | tonnes | kgs |
| M12 | 17 | 5 | 22 | 9 | 27 | 18 | 0.32 | 0.08 |
| M16 | 23 | 6 | 29 | 11 | 34 | 23 | 0.63 | 0.14 |
| M20 | 32 | 9 | 40 | 15 | 47 | 32 | 1.25 | 0.40 |
| M24 | 40 | 12 | 51 | 19 | 60 | 40 | 2.00 | 0.78 |
| M30 | 51 | 14 | 64 | 24 | 76 | 51 | 3.20 | 1.78 |
| M36 | 63 | 18 | 79 | 30 | 95 | 63 | 5.00 | 2.44 |
| M42 | 70 | 20 | 88 | 33 | 105 | 70 | 6.30 | 4.10 |
| M48 | 79 | 22 | 99 | 37 | 118 | 79 | 8.00 | 7.70 |
| M52 | 89 | 26 | 112 | 42 | 134 | 89 | 10.00 | 10.00 |

TABLE 6

| A | B | D | E | F | G | H | SWL | Weight Each |
|--------|----|----|-----|----|-----|----|--------|-------------|
| inches | mm | mm | mm | mm | mm | mm | tonnes | kgs |
| 3/8 | 17 | 5 | 22 | 9 | 27 | 18 | 0.25 | 0.08 |
| 1/2 | 23 | 6 | 29 | 11 | 34 | 23 | 0.50 | 0.08 |
| 5/8 | 28 | 8 | 35 | 14 | 42 | 28 | 0.90 | 0.14 |
| 3/4 | 32 | 9 | 40 | 15 | 47 | 32 | 1.25 | 0.40 |
| 7/8 | 35 | 10 | 44 | 17 | 53 | 35 | 1.60 | 0.60 |
| 1. | 40 | 12 | 51 | 19 | 60 | 40 | 2.00 | 0.78 |
| 1. 1/4 | 51 | 14 | 64 | 24 | 76 | 51 | 3.20 | 1.90 |
| 1. 1/2 | 63 | 18 | 79 | 30 | 95 | 63 | 5.00 | 2.44 |
| 1. 3/4 | 79 | 22 | 99 | 37 | 118 | 79 | 8.00 | 7.70 |
| 2 | 89 | 26 | 112 | 42 | 134 | 89 | 10.00 | 10.00 |

**BFE
21**

© Brooks Forgings Ltd 2008

SPECIFICATIONS AVAILABLE

MATERIAL BS970 080A27 (EN8A) **EYEBOLTS ARE SUITABLE FOR VERTICAL LIFTS ONLY** **FINISH** SELF COLOUR
STAINLESS STEELS **IF ANGLED LIFT REQUIRED BS4278 TABLE 1** GALVANISED
ALLOY STEELS **EYEBOLTS MUST BE USED** ELECTROPLATED
B7 PTFE COATING

tel. 01384 566772 fax. 01384 637380 web. www.brooksforgings.co.uk