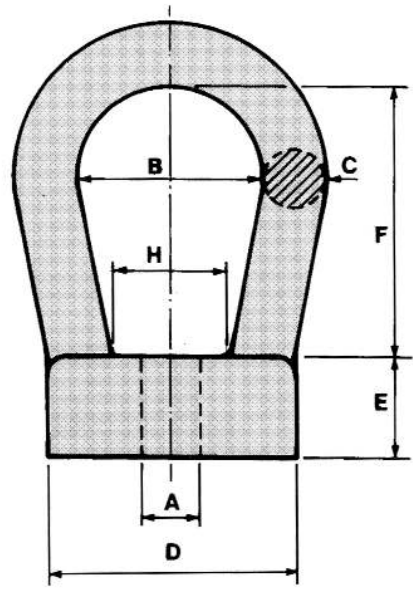


**Bow Nuts**

TO BS3974 : 1974 PART 1

**BFE  
23**

A		B	C	D	E	F	H	SWL	Weight Each
mm	inches	mm	mm	mm	mm	mm	mm	kgs	kgs
M8	1/4	25	10	32	16	41	18	230	0.2
M10	3/8	25	10	32	16	41	18	360	0.2
M12	1/2	30	12	38	18	43	20	530	0.3
M16	5/8	30	12	38	18	43	20	1010	0.3
M18	3/4	40	14	45	25	63	25	1290	0.6
M20	---	40	14	45	25	63	25	1580	0.6
M22	7/8	50	17	50	28	79	30	1930	0.6
M24	1	50	17	50	28	79	30	2280	0.9
M30	1. 1/8	75	26	70	38	82	46	3650	2.4
M33	1. 1/4	75	26	70	38	82	46	4490	2.4
M36	1. 1/2	75	26	70	38	82	46	5340	2.4
M42	1. 3/4	100	30	80	45	105	59	7400	4.8



© Brooks Forgings Ltd 2008

**SPECIFICATIONS AVAILABLE**

**MATERIAL**  
CARBON STEELS  
STAINLESS STEELS  
ALLOY STEELS  
B7

S.W.L. SHOWN IS FOR VERTICAL LIFT ONLY  
ITEMS SUPPLIED UNTESTED UNLESS REQUESTED

**FINISH**  
SELF COLOUR  
GALVANISED  
SHERADIZED  
ELECTROPLATED  
CHEMICAL BLACK

tel. 01384 566772 fax. 01384 637380 web. www.brooksforgings.co.uk